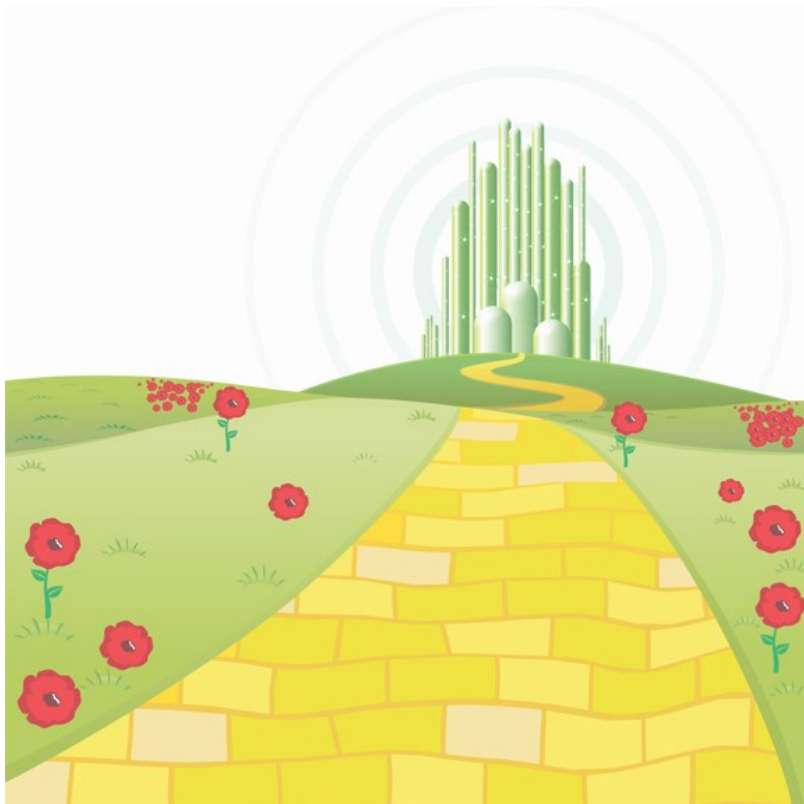


CULINARY SPECIALTIES

— Est. 1990 —

4715 N. Hale Ave
Tampa FL, 33614

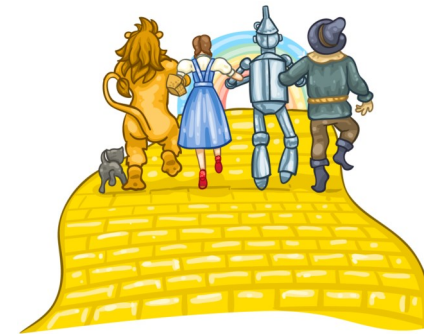
Phone: 813-876-8760



CULINARY SPECIALTIES

— Est. 1990 —

Catering Menu



Boxed Lunches

- Cold or Hot Sandwiches served with Chips and a Cookie

Entrees

- Ready to Eat Meals; Individually Packaged or Family Size

Desserts

- Cupcakes and Cookies

BOXED LUNCHES

All Lunches come with Chips (fruit available for \$1.50 upcharge) and a Cookie; Drinks are not included

COLD SANDWICHES: Minimum 7 people; \$10.00 per person

Over the Rainbow: Turkey, Ham, Bacon, Cheese, Lettuce, Tomato, and Golden Dressing piled between three slices of Pumpernickel Bread

The Great & Powerful Oz: Roast Beef, Turkey, Ham, Cheese, Bacon, Lettuce, Tomato, and Golden Dressing piled HIGH on 5 slices of Pumpernickel Bread

Cowardly Lion: Chicken salad, Lettuce, and Tomato with Golden Dressing on Pumpernickel Bread

Glinda the Good Witch: Sprouts, Tomato, Onion, Pickle, Green Pepper, and Golden Dressing on a Sourdough Rye

HOT SANDWICHES: Minimum 7 people; \$10.00 per person

The Scarecrow: Hot Corned Beef, Cheese, Sauerkraut, and Dark Mustard on Pumpernickel Bread, Grilled

Flying Monkeys: Triple Decker made with Ham, Turkey, Salami, Dill Pickle, Cheese, and Golden Dressing on Pumpernickel Bread, Grilled

Dorothy's Dream: Turkey, Ham, Bacon, Pickle, Cheese, piled high on an Onion Roll, Grilled

A Twister: Ham, Bacon, Cheese, and Spicy Hot Sauce on Rye Bread, Grilled

ENTREES

All Entrees are Fully Cooked and Ready to Eat; Drinks are not included

Scachatta Pizza: Full Sheet feeds 10-20 people; \$37.00

Chicken Parmesan w/Spaghetti: Individually packaged option; \$12.99 per person (10 minimum)

Penne Pasta w/Meat Sauce: Individually packaged option; \$9.99 per person (10 minimum)

***SPECIAL OF THE WEEK:** Chef Inspired Dish; Market Value

SANDWICH TRAY ASSORTMENTS

Assorted Cold Sandwich Tray: Feeds 10 people; \$49.99

Assorted Hot Sandwich Tray: Feeds 10 people; \$49.99

SIDES & DESSERTS

Chips: \$1.50

Assorted Chips: \$12.00 (Feeds 10 people)

Fruit Cup: \$3.00

Devil Crabs: \$4.50 each (10 minimum)

Cookies: \$1.45 (10 for \$14)

Cupcakes: \$34.50 (Sold by the dozen)

DRINKS

Bottle Water: \$1.25

Coke Products: \$1.50